

BOND UPDATE

August 2024

#ThankYouVoters

WALLER JUNIOR

PHASE 1 COMPLETION SUMMER 2023
PHASE 2 COMPLETION SUMMER 2024



- Final Fire Marshal and Building inspections are scheduled.
- Project punch list is being composed and corrective work continues.
- HVAC test and balance has started, and Building Commissioning as begun.
- Final cleaning continues.
- Graphics have been installed.
- New furniture is installed and teacher box have been moved in.

WALLER JUNIOR HIGH



Phase 2 Addition and Main Entry

WALLER ISD
CONSTRUCTION



Auditorium Exterior



Waiting Room



Lobby and Entrance

WALLER JUNIOR HIGH



Admin Conference Rooms

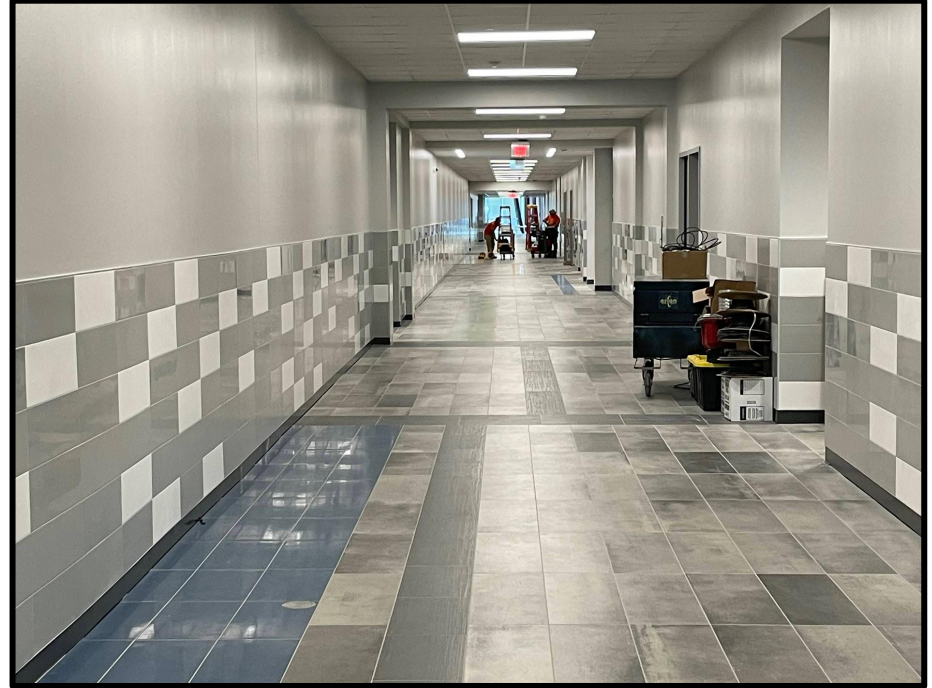
WALLER JUNIOR HIGH



Workroom



Office



Hallway and Main Corridor



Collaboration areas



Art Classroom & Collaboration





Classroom



Choir Room

STADIUM IMPROVEMENTS

- Field lighting is being upgraded with LED with increase brightness.
- Scoreboard is being upgraded to larger Video Board.
- Sound System is being replaced and upgraded throughout the stadium.

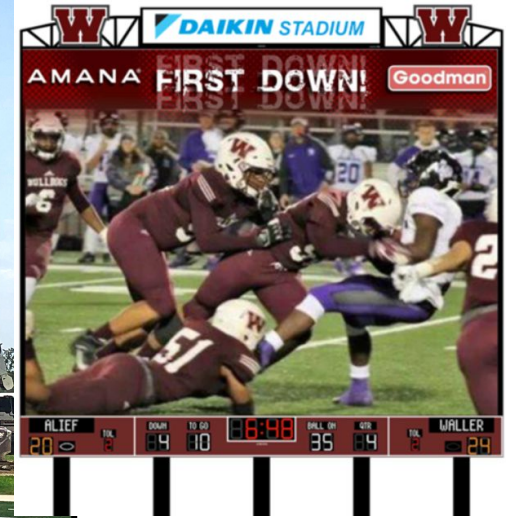
Independence



LED
Lighting
Upgrade



Video
Board



- Site clean up and landscaping are ongoing and 90% complete.
- New perimeter fencing and gates are nearly complete.
- Classrooms are 99% complete and have started punch list and clean up.
- New furniture and teacher box moves have been moved in.
- Storefront windows and doors are being installed.
- Marker boards and tack boards are in progress.
- Kitchen equipment is complete.

LOWE ELEMENTARY - #6

DELLROSE



LOWE ELEMENTARY



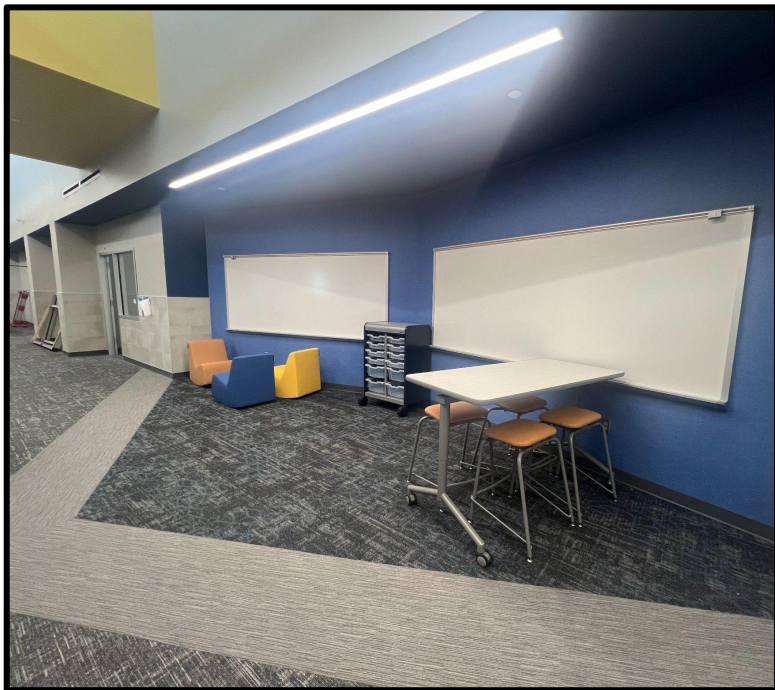
Front Entry



STEAM Room and Media Center



Classrooms

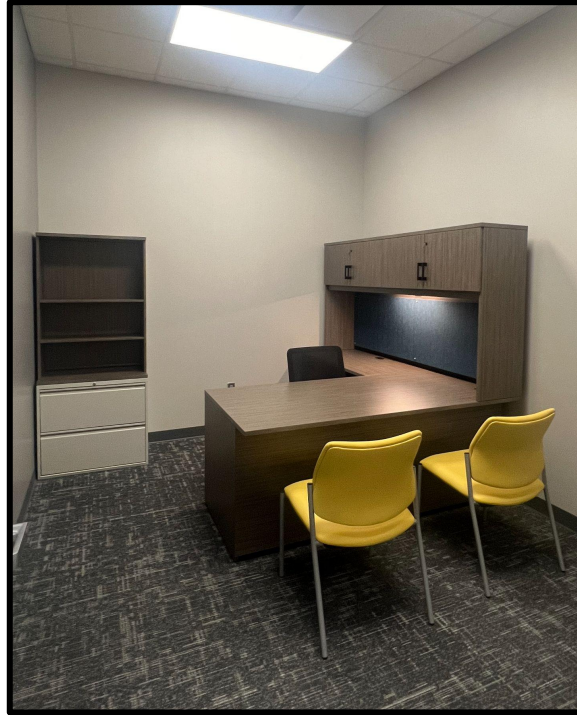


Collaboration areas and corridors



Restrooms





Admin Suite



Landscaping and Playground

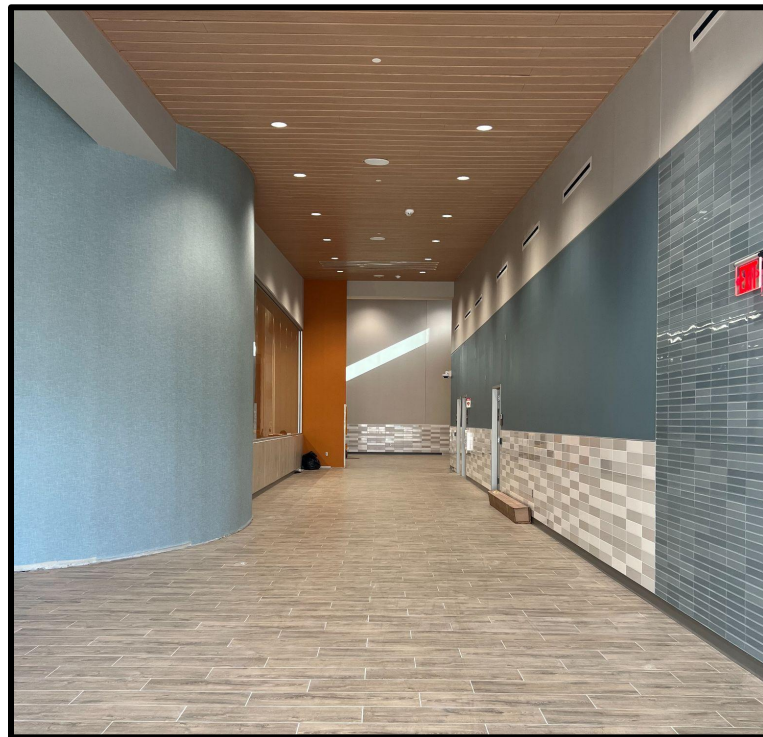
MCREAVY ELEMENTARY - #7

BRIDGELAND





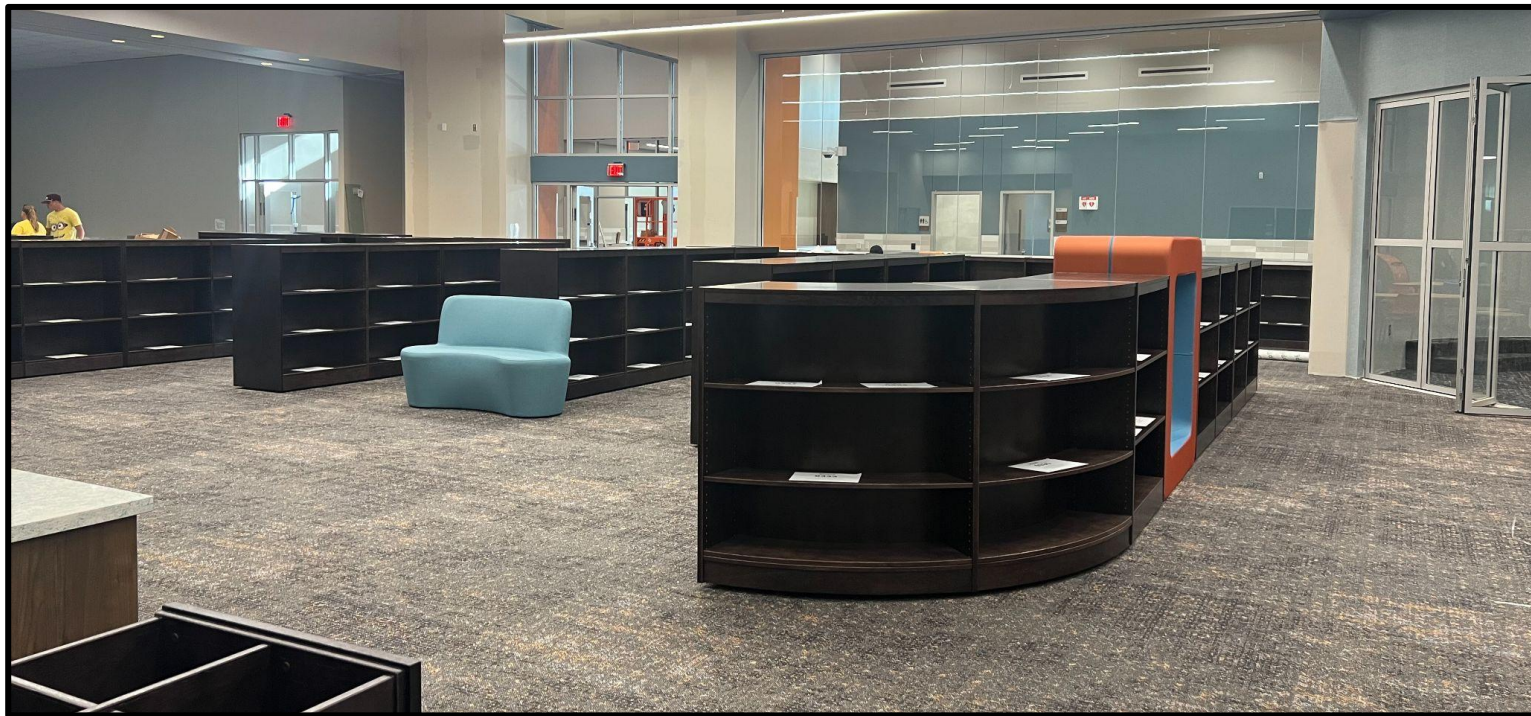
Front Entry



Corridors



Classroom and Teacher Planning



Media Center



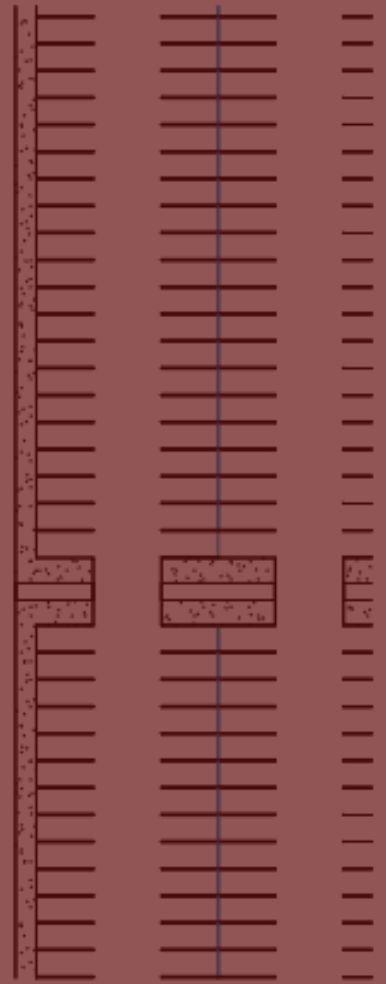
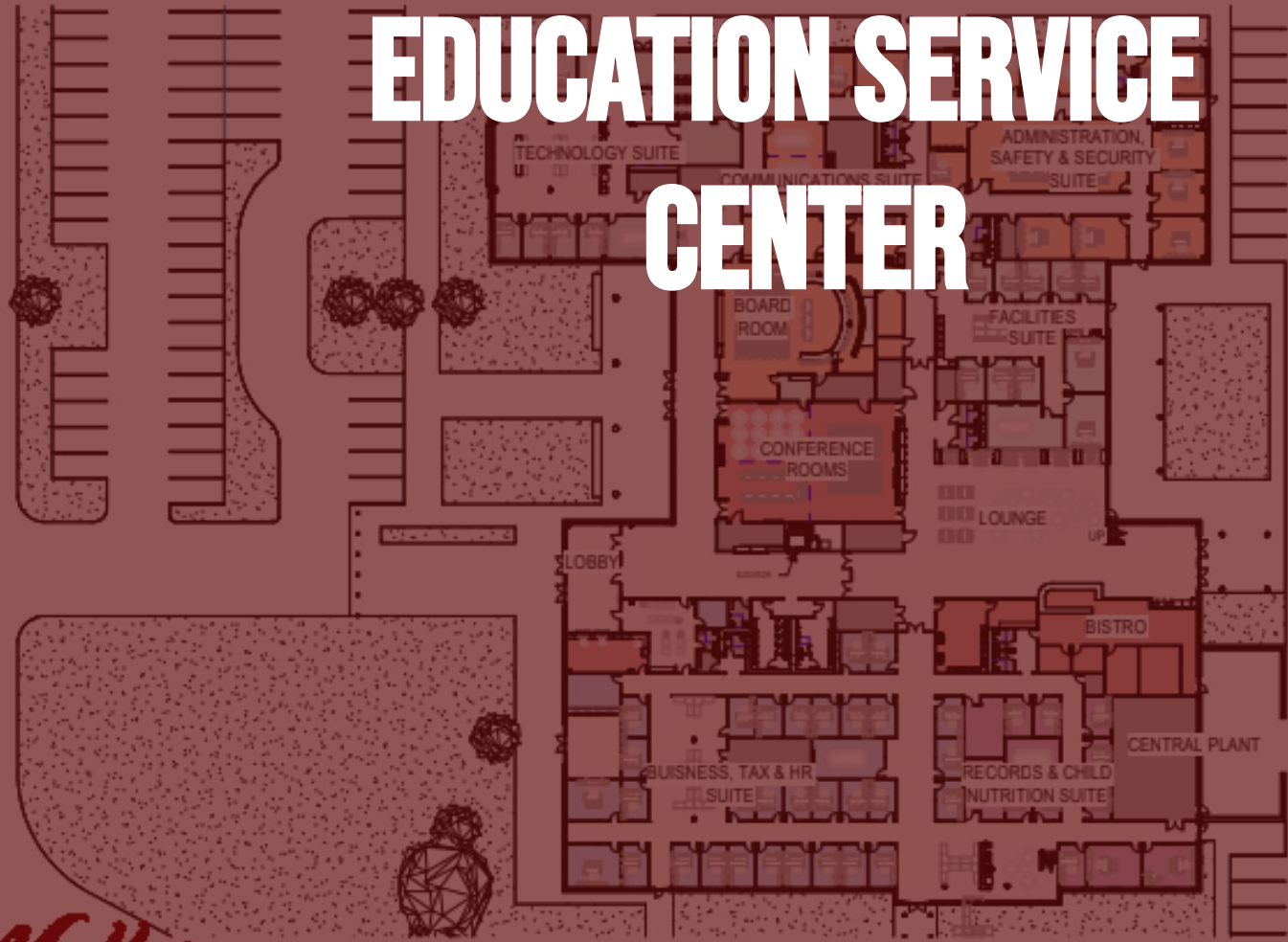
Playground



Landscaping



EDUCATION SERVICE CENTER



- Sitework continues on the ESC-Transportation-Ag-Elementary #8 project.
- ESC structure has been erected and roof decking is in progress.
- Steel detailing is nearing completion and fireproofing has started at Elementary #8.
- Ag Science structure has been erected. Roof, wall framing, and MEP installation has begun.

ESC-Ag-Elementary #8



Aerial View - Northeast Corner

ESC-Ag-Elementary #8 Site



Road Paving and Light Pole Base



Front Elevation

Elementary #8



Exterior Framing





Ductwork



Elementary #8



Kitchen



Front Elevation

Ag Barn



CMU Walls and Plumbing





Structure



Stairs and Second Floor Decking



Transportation Building





Fueling Station



Priority 1 Improvement

- Reroof of Schultz JH and Roberts Road Elementary are starting.
- New FrontRow classroom sound system and campus PA being installed at SJH.
- Safety film has been installed at all P1 campuses.
- Security fencing installation has begun at FSE, RRE, HES, JES, and TES.
WJH Aux Stadium and SJH is upcoming.
- Sliding marker boards have begun installation at Jones ES.
- Security Signage installation has started at all the P1 campuses.

Priority 1 Projects

A photograph of a classroom filled with children of various ages, from young children to teenagers. They are all expressing excitement, with many having their arms raised in the air. The children are seated at small, light-colored tables with blue chairs. The classroom has white walls, a tiled ceiling, and various educational posters and supplies visible in the background. The entire image is overlaid with a semi-transparent red filter.

#ThankYouVoters

Waller
Independent School District